

Editorial

Dear Customer!
Dear Business Partner!

I believe you do agree when I say that business started well into the New Year 2006, at least if you are working in construction in the Middle East. Whomever I spoke to during recent weeks I received one answer in unison: 'Very busy'!

Dubai and Qatar are presently the front runners but business also in Abu Dhabi, Kuwait and Bahrain is picking-up strongly. Not to forget the very active Saudi Arabia and, of course, also Iran. The oil producing countries decided finally to invest their oil Dollars at home, putting their names proudly onto the international map for outstanding construction achievements and places for dream holidays.

Consequently we should assume that everything is just fine but unfortunately it is not. I am unsure if there is any place in my small editorial column for a political statement but I spent many years of my life in the Middle East and I understand myself as a true friend to Arabs and Muslims in general.

The recent outrage of hate in some Muslim countries against Europeans is difficult to understand. Don't you remember that most European countries have been good and reliable partners to the Muslim world for centuries? How is it possible that the mistake of an unimportant newspaper spoils our good relation in such dramatic way? Is our friendship that fragile and easy to destroy?

Please let's work together for a more responsible and tolerant environment. Our own, personal influence may be limited but if we all will do the needful amongst our families and friends we might be able to change the world for the better. Please help!

Very truly yours,
Karl H. Pacik

www.imeco.at

Upcoming Events

We are very pleased to inform you that we will participate this year at following construction machine and equipment exhibitions in the Middle East:

- **PROJECT QATAR**, Doha, 1.5. - 4.5.2006
- **REBUILD IRAQ**, Amman, 8.5 - 11.5.2006
- **BIG5**, Dubai, 28.10. - 1.11.2006

We don't yet know our stand numbers but we will inform you about further details as soon as available. Looking forward to seeing you there!

— DEWATERING

Trenches for sewer systems, microtunnelling shafts, foundations for buildings and bridges, underpasses etc. wherever excavations of more than 1.5 - 2.0 m depth are made some kind of dewatering system is indispensable for the safe and proper execution in many Middle East areas.

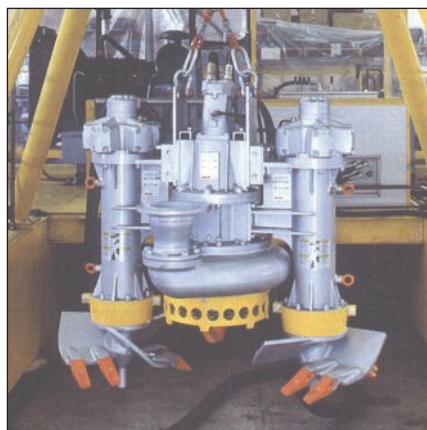


Electrical submersible pumps are the most economical dewatering method in soils with very high permeability such as coarse sand or gravel. Submersible pumps are installed in small pump sumps or in deep wells of 400 to 800 mm diameter made of closed bottom end, bridge-slot filters and riser pipes.

Our heavy duty submersible pumps are available in capacities from 50-500 l/sec and with a delivery head of up to 60 m. The use of high grade steel alloys guarantee long life and little maintenance.



The vacuum wellpoint dewatering system is most recommended for sandy and clayey soils and is therefore widely used all over the coastal areas in the Middle East. We use self-priming, trailer mounted pumps with vacuum assistance, driven by diesel or electric motors with a discharge capacity of 120-600 m³/h (discharge diameter 3-12 inch). In addition we also supply high-pressure jetting pumps for installing the wellpoint filters as well as all required accessories such as filters, header pipes, etc.



Our heavy duty submersible pumps with agitator in electric or hydraulic versions are available with a maximum discharge capacity of up to 1100 m³/h whereby solids of up to 120 mm diameter can be discharged. Main applications are small dredging projects (especially in connection with side-mounted hydraulic excavators) and where large quantities of liquids with or without solids have to be pumped. The hydraulic pumps can be driven by any suitable power pack with open-loop system, available also from us.

— SHEET PILES

Due to the fact that a complete new line of hot rolled sheet piles type AU is now available and that many PU as well as AZ sections have been also redesigned we are showing you below the new manufacturing program:

U-type Sheet Piles

Type	Width	Height	Back	Flange	Weight	Weight	Section Modulus	Moment of Inertia
	mm	mm	mm	mm	kg/m	kg/m ²	cm ³	cm ⁴
AU14	750	408	10.0	8.3	77.9	104	1410	28710
AU16	750	411	11.5	9.3	86.3	115	1600	32850
AU17	750	412	12.0	9.7	89.0	119	1665	34270
AU18	750	441	10.5	9.1	88.5	118	1780	39300
AU20	750	444	12.0	10.0	96.9	129	2000	44440
AU21	750	445	12.5	10.3	99.7	133	2075	46180
AU23	750	447	13.0	9.5	102.1	136	2270	50700
AU25	750	450	14.5	10.2	110.4	147	2500	56240
AU26	750	451	15.0	10.5	113.2	151	2580	58140
PU 6	600	226	7.5	6.4	45.6	76	600	6780
PU 8	600	280	8.0	8.0	54.5	91	830	11610
PU 12	600	360	9.8	9.0	66.1	110	1200	21600
PU 12/10	600	360	10.0	10.0	69.6	116	1255	22580
PU 18**	600	430	11.2	9.0	76.9	128	1800	38650
PU 22	600	450	12.1	9.5	86.1	144	2200	49460
PU 25	600	452	14.2	10.0	93.6	156	2500	56490
PU 32	600	452	19.5	11.0	114.1	190	3200	72320

Z-type Sheet Piles

Type	Width	Height	Back	Flange	Weight	Weight	Section Modulus	Moment of Inertia
	mm	mm	mm	mm	kg/m	kg/m ²	cm ³	cm ⁴
AZ 12	670	302	8.5	9.5	66.1	99	1200	18140
AZ 13	670	303	9.5	9.5	72.0	107	1300	19700
AZ 14	670	304	10.5	10.5	78.3	117	1400	21300
AZ 17	630	379	8.5	8.5	68.4	109	1665	31580
AZ 18	630	380	9.5	9.5	74.4	118	1800	34200
AZ 19	630	381	10.5	10.5	81.0	129	1940	36980
AZ 25	630	426	12.0	11.2	91.5	145	2455	52250
AZ 26	630	427	13.0	12.2	97.8	155	2600	55510
AZ 28	630	428	14.0	13.2	104.4	166	2755	58940
AZ 34	630	459	17.0	13.0	115.5	183	3430	78700
AZ 36	630	460	18.0	14.0	122.2	194	3600	82800
AZ 38	630	461	19.0	15.0	129.1	205	3780	87080
AZ 46	580	481	18.0	14.0	132.6	229	4595	110450
AZ 48	580	482	19.0	15.0	139.6	241	4800	115670
AZ 50	580	483	20.0	16.0	146.7	253	5015	121060
AZ 36-700	700	499	17.0	11.2	118.5	169	3600	89740
AZ 38-700	700	500	18.0	12.2	126.2	180	3800	94840
AZ 40-700	700	501	19.0	13.2	133.8	191	4000	99930
AZ 13/10	670	304	10.0	10.0	75.2	112	1350	20480
AZ 18/10	630	381	10.0	10.0	77.8	123	1870	35540

— DRIVING SHEET PILES & H-PILES

We offer a wide range of machines and equipment for driving and extracting sheet piles, H-piles and and pipe piles using vibratory or impact driving techniques with hydraulic vibrators, hydraulic impact hammers and diesel impact hammers, whereby the pile drivers can be mounted

1. directly to the boom of a hydraulic excavator
2. to a fixed leader which is mounted to the boom of a hydraulic excavator
3. to the telescopic or fixed leader of a dedicated hydraulic piling rig (ABI or Banut)
4. to a hanging leader supported by a crawler crane
5. free suspended by the rope of a crawler crane

Every method has its advantages and of course also limits and the photos below together with the short description should assist you in selecting the technically best and also most feasible piling system for your own project. The listing of applications is of course not complete. Hydraulic hammers mounted to (2) can be used for soil compaction and Mobilram piling rigs can do soil mixing and gravel piles. Therefore whenever you intend to invest in some piling equipment we kindly ask you to call us and to make use of our long term experience.



1. Hydraulic add-on vibrators mounted directly to the boom of an excavator and operated by the hydraulic system of the base machine is the least expensive method for driving sheet piles and H-piles of 6-8 m length with great performance. A skilled operator is required.



2. Fixed leaders of up to 15 m length mounted to the boom of a hydraulic excavator are an excellent base for guiding hydraulic vibrators and impact hammers as well as diesel hammers or auger drives. The base machine should have an operating weight of 30-45 tons.



3. Piling rigs with fixed or telescopic leaders are the ideal machines for driving piles of up to 20 m length with hydraulic vibrators. Main advantages are excellent manoeuvrability, outstanding performance and unmatched piling precision with least manpower.



4. Conventional piling rigs consisting of crawler crane and hanging leader which guides vibrators or impact hammers offer very versatile solutions for heavy duty piling works, especially for combi walls, pipe piles and batter piles. Auger drives can be mounted too.



5. Rope-suspended pile drivers (vibrators and impact hammers) can drive everything, from small sheet piles to huge steel casings. If the crawler crane is already available the investment cost are reasonable and if there is no piling job the crane can still work a lifting device.

Nearly no piling job is too big:

- concrete casing diameter 11 m
- casing length 24 m
- total weight over 500.000 kg



— DRILLING TOOLS



Our product range covers following drilling tools for foundation rigs, available in standard or heavy duty version:

- drilling augers for clay and rock
- double bottom buckets for clay and rock
- borehole cleaning buckets
- core barrels with bits or bars
- replacement teeth for soil
- round shank carbide bits for rock
- single and double wall casings
- casing twistlers
- casing shoes
- friction and locking kelly bars
- continuous flight augers
- soil displacement augers

— DRILL MAST

Add-on drill masts are very economical and versatile tools for a wide range of drilling applications i.e. blast hole drilling, pre-drilling of hard soil for the installation of wellpoint filters, small anchors, etc. The base machine can be either a small backhoe loader or a hydraulic excavator up to 25 tons operating weight. All usual drilling methods may be applied such as hydraulic auger drives, drifters and DTH hammers whereby the required hydraulic power is taken from the base machine. We supply add-on drill masts with up to 8 m stroke. All controls are in the operator cabin.



Imeco HandelsgesmbH
 Traklgasse 25/1
 1190 Vienna, Austria
 Tel (43.1) 328 9980
 Fax (43.1) 328 9944
 Email imeco@imeco.at
www.imeco.at



Please visit the picture gallery at our website to see some recently sold machines and equipment.

— USED EQUIPMENT

Presently it is very difficult to find any good second hand foundation rigs at a reasonable price but we still can offer some excellent used

- hydraulic vibrators
- Mobilram piling rigs
- impact hammers
- crawler cranes up to 250 ton i.e.



Kobelco KH7150, capacity 150 ton, boom length 52 m, year 1995. Please contact us with your needs and you may rest assured that we offer you only good condition equipment at a reasonable price.

— Imeco Product Line

TRENCH SHORING

- trench sheets and sheet piles
- trench struts
- trenchboxes
- sliderail elements
- linear shoring system
- pit and shaft shoring
- soldier pile shoring
- tie rods

DEWATERING

- vacuum pumps
- high pressure jetting pumps
- self-priming contractors pumps
- wellpoint accessories
- submersible pumps
- deep well accessories
- agitator pumps (with excavators)

TUNNELLING

- horizontal directional drill rigs
- auger boring machines
- small rock boring heads
- pipe jacking equipment
- hard rock TBMs
- tunnel mucking equipment

PILING

- hydraulic add-on vibrators
- crane-suspended vibrators
- diesel impact hammers
- hydraulic impact hammers
- conventional piling leaders
- piling rigs with telescopic leaders
- hydraulic piling rigs
- soil improvement equipment

DRILLING

- hydraulic crawler drill rigs
- hydraulic rotaries and drifters
- double drill heads
- add-on auger drives
- strand and bar anchors
- drilling tools
- self-drilling micropiles
- grouting mixers and pumps
- jetgrouting equipment

FOUNDATION

- hydraulic foundation rigs
- soil displacement rigs
- equipment for CFA and SDA
- casing oscillators
- casings and casing joints
- drilling tools
- pile and diaphragm wall grabs
- friction and locking kelly bars
- bentonite mixers
- desanding units

OTHERS

- hydraulic drum cutters
- hydraulic rock saws
- telescopic excavator booms
- crawler cranes (used)